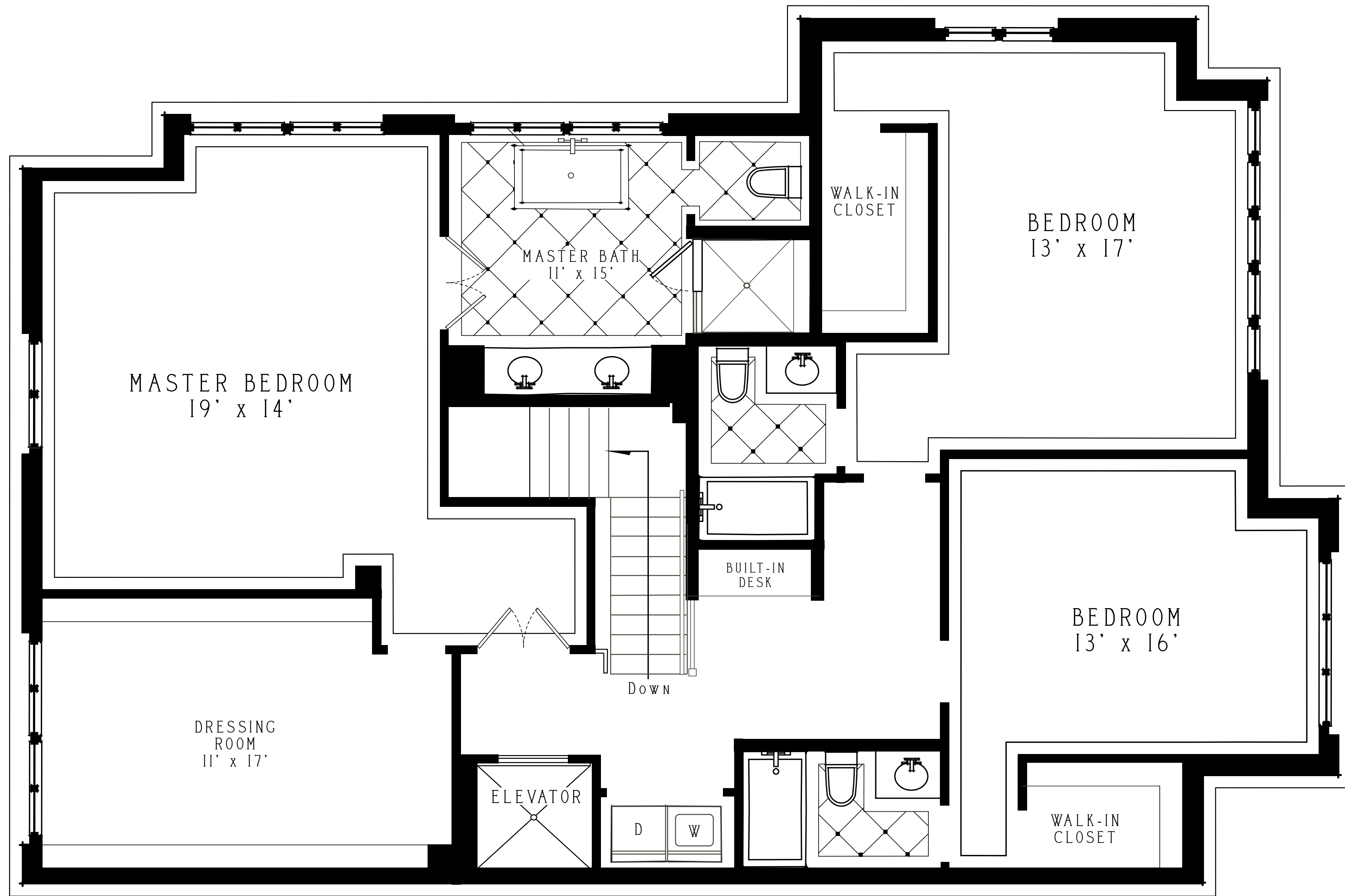


THIS IS AN ARTIST'S RENDERING. COMPLETED BUILDINGS MAY VARY FROM PLAN. ALL ROOM ROOM SIZES, DIMENSIONS, MATERIALS AND SQUARE FOOTAGES ARE APPROXIMATE AND SUBJECT TO AS-BUILT CONDITIONS. SOME HOMES MAY BE BUILT IN THE MIRROR IMAGE OF THIS PLAN. ROOF LINES AND GRASSES MAY VARY IN APPEARANCE, SIZE AND LOCATION BASED UPON LOCATION OR TOPOGRAPHY.

# NORWOOD HOUSE

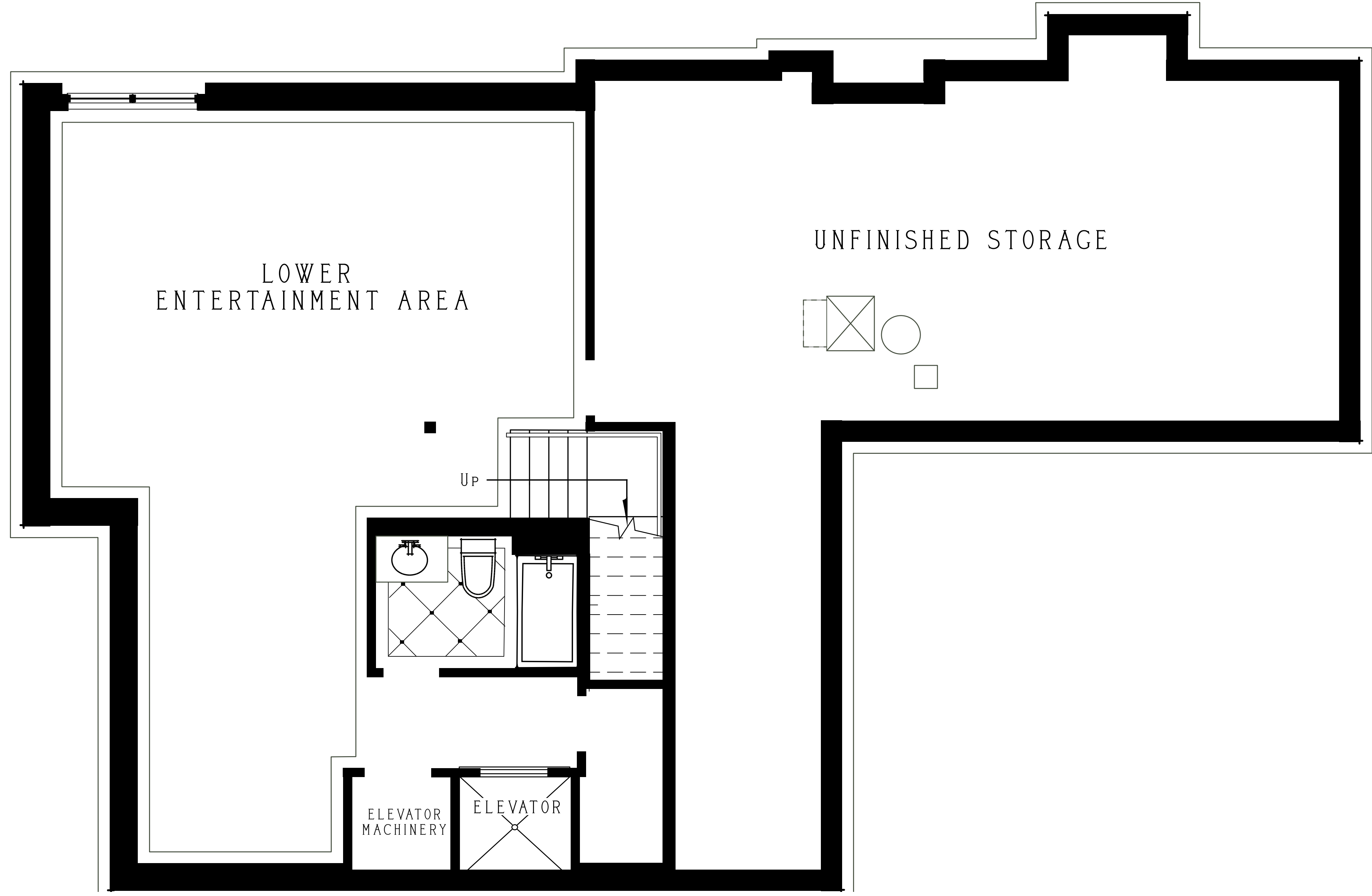
4,081 sq. ft.  
3 bedrooms | 4 1/2 baths  
**MAIN FLOOR** 1,561 sq. ft.



THIS IS AN ARTIST'S RENDERING. COMPLETED BUILDINGS MAY VARY FROM PLAN. ALL ROOM ROOM SIZES, DIMENSIONS, MATERIALS AND SQUARE FOOTAGES ARE APPROXIMATE AND SUBJECT TO AS-BUILT CONDITIONS. ROOM LINES AND GRAYS MAY VARY IN APPEARANCE, SIZE AND LOCATION BASED UPON LOCATION OR TOPOGRAPHY.

# NORWOOD HOUSE

4,081 sq. ft.  
3 bedrooms | 4 1/2 baths  
UPPER FLOOR 1,745 sq. ft.



THIS IS AN ARTIST'S RENDERING. COMPLETED BUILDINGS MAY VARY FROM PLAN. ALL ROOM ROOM SIZES, DIMENSIONS, MATERIALS AND SQUARE FOOTAGES ARE APPROXIMATE AND SUBJECT TO AS-BUILT CONDITIONS. WALLS, FLOORS, ROOF LINES AND GRASSES MAY VARY IN APPEARANCE, SIZE AND LOCATION BASED UPON LOCATION OR TOPOGRAPHY.

# NORWOOD HOUSE

4,081 sq. ft.  
3 bedrooms | 4 1/2 baths  
FINISHED LOWER LEVEL 775 sq. ft